



Driver comfort and safety

The driver is seated comfortably in the driving position and is protected by a glazed screen on all sides. This helps to reduce all types of outside influence, such as excessive noise or intrusion by another passenger, without interfering with their visibility.



An ergonomic driving position !

Adjustment of the driving position is made easier thanks to the ergonomic layout of the controls and instrumentation surrounding the driver.



CITELIS



Parc Technologique de Lyon
9, allée Irène Joliot-Curie
69806 Saint-Priest Cedex - France
Tel: +33 (0)4 72 79 65 00
www.irisbus.com



DOS MAJEUR
Driving position ergonomics - Driver training
43, boulevard Saint-Louis - 43000 Le Puy-en-Velay - France - Tel: +33 (0)4 71 09 49 42
www.dosmajeur.com

Dimensions and features are given for information. To better meet the needs of its customers, the company reserves the right to alter the specification at any time without prior notice.



CITELIS



Comfort and satisfaction

Easy access to the driver's seat

The wide opening door and the large entrance steps provide easy and safe access to the driver's seat, both when getting in and out of the Citelis.



Driving position and environment

Position:

- The high position of the driver's seat affords an excellent view of all surrounding traffic and obstacles in busy urban environments, whilst enhancing the value of the driver's role as the commercial contact with the passengers.

Storage space:

- The Citelis provides ample storage space for the driver's belongings, with an elevated storage compartment as well as stowage space integrated in the door.



The natural standing position

Overall position of spine:

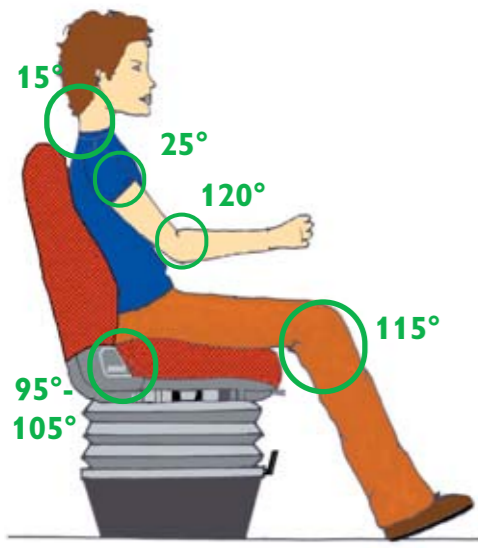
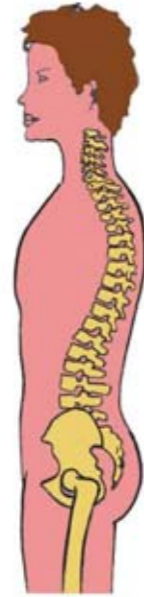
- In profile, this position embodies three vital curves,
- It allows the back to be perfectly aligned.

Composition:

- Vertebra: a series of small bones that are stacked upon each other,
- Muscles: tissue in the body which is subject to fatigue,
- Discs: pivots between each vertebra,
- Ligaments: tough flexible tissue that connects the body,
- Nerves: that emerge freely behind each disc.

In this position, there is consideration for each element:

- Wear, fatigue and pain is kept to a **minimum**,
- Efficiency, comfort and satisfaction is at its **maximum**.



Recommended angles

Seated in comfort

Position of driver:

- Significant consideration has been given to ensuring maximum comfort for the driver, with a fully adjustable seat and steering wheel to ensure the driver can maintain the three vital curves which are essential to good posture.
- Back angled to the rear, to relax the muscles.



9-10



2



3



4



10



5

6

4

1

7



3



5



8



9



8



7



6

Instructions:

- 1 Adjust the the seat cushion horizontally:** move the cushion to the horizontal position. That is the reference position (rake angle from -4° to +12°).
- 2 Adjust the seat cushion depth:** to fully support the your hips (control at front of cushion - travel: 6 cm).
- 3 Adjust the seat squab rake angle:** inclined through 95° to 105° (mechanical control with successive notches every 2°).
- 4 Adjust the seat height:** so that your hips are fully supported (travel: 10 cm).
- 5 Adjust the lumbar support:** inflate 1 or 2 cells so that the entire lumbar region is in contact with the squab.
- 6 Quick lowering of the cushion:** does not interfere with the adjustment procedure. This makes it easier to get out of the driving position (while keeping the settings already made).
- 7 Adjust the seat shock absorber:** to your preferred setting (high position: hard - low position: supple) in relation to the state of the road.
- 8 Adjust the seat forwards or backwards:** with your foot on the pedal, move the seat forwards or backwards so that the angle at your knee is 115° (travel: 23 cm).
- 9 Adjust the rake angle of the steering column:** with your hands on the steering wheel, the angle of your shoulders should be 25° (travel: 10 to 12 cm).
- 10 Adjust the height of the steering wheel:** with your hands on the steering wheel, the angle of your elbows should be 120° (travel: 11 cm).

These adjustments are intended for the large majority of drivers.

However:

For tall people:

- Raise the front of the seat: **Button 1**
- Angle the squab slightly rearwards: **Button 3**
- Do not systematically move the seat away from the steering wheel or move the seat backwards !

For small people:

- Angle the cushion slightly forwards: **Button 1**
- Raise the squab through a few degrees: **Button 3**